

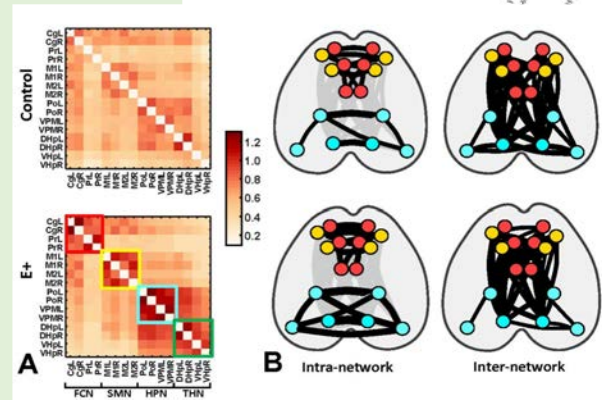
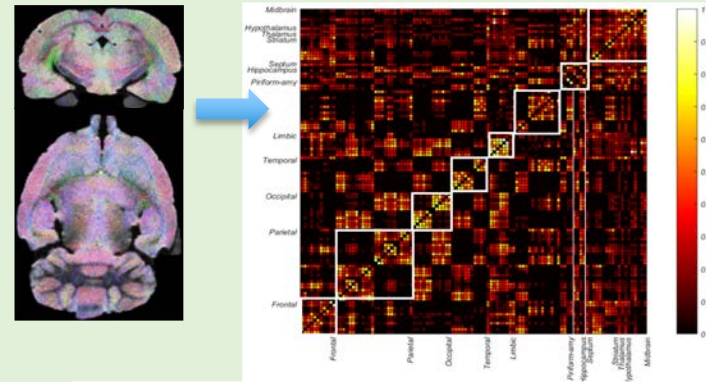
Lin Li - Assistant Professor of Biomedical Engineering



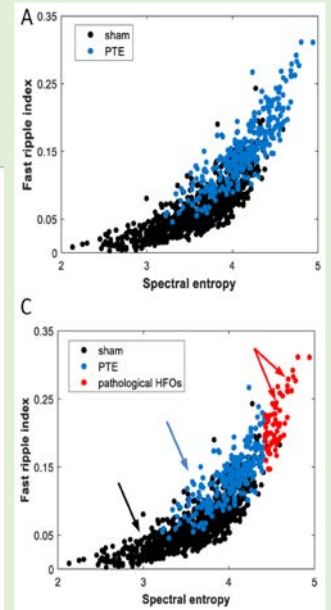
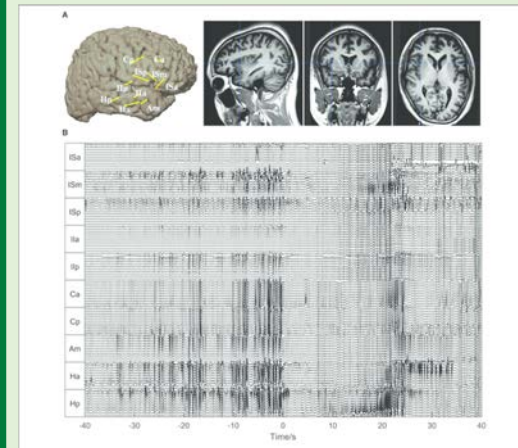
RESEARCH AREAS

Multi-modality approaches in biomarker study of posttraumatic epilepsy

Structural & functional networks in the latent period of posttraumatic epilepsy



Development of data-driven approach for automatic pattern recognition in Neurointensive Care Unit



Clinical Decision Support System: SEEG postoperative diagnosis and surgical guidance

Postdoc, Computational Neuroscience,
University of California Los Angeles
PhD, Bioengineering, University of Texas
at Arlington Joint with UT Southwestern
Medical Center
BS, Optoelectronics, Huazhong University
of Science and Technology, Wuhan, China